

DUPLO WC 199 SLIM

Ord. no.

T02-2116-0250

EAN-Code

8681282616374

The line of concealed systems is the perfect choice for bathroom and sanitation facilities equipment. The perfect feature of economical and silent flushing is invisible in the room and aesthetically compatible with the bathroom equipment of your choosing due to our wide selection of flushing plates.

INSTALLATION METHOD

Installation in prefabricated walls, pre-wall installation in dry walls, universal installation into solid walls

PROPERTIES

Supporting, blue powder coated WC element, square profile 30x30 mm with pre-assembled 199 UP concealed cistern

Frontal flushing, for dual flushing (3/6 L)

Flush volume adjustable (large flush 4-7 L, small flush 2-3 L)

Pre-assembled wall brackets and adjustable feet (0-200 mm)

Water connection - top center

Fully insulated against condensation

SPECIAL FEATURES

Quiet Hydraulic Fill valve (Noise class 1 ISO 3822)

Depth adjustable drain elbow (+/- 20 mm)

PRODUCT CONTAINS

Concealed cistern equipped with pre-installed stop valve – top center

Water connection G 1/2

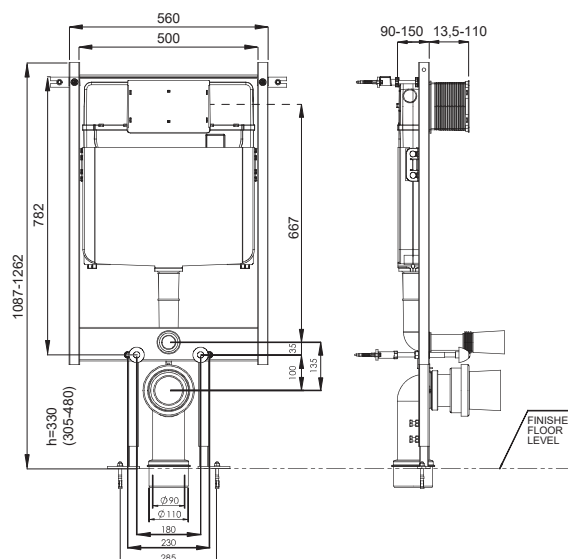
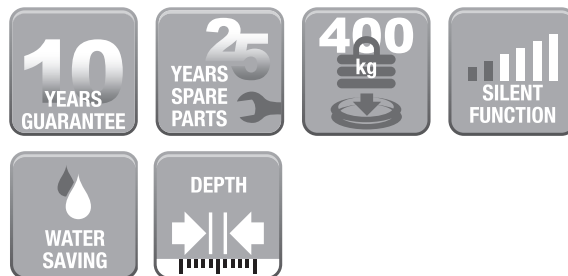
PE drain elbow Ø 90 mm with seal

PE adapter Ø 90 / 110 mm with seal

Complete installation and fixing material

PACKAGING

15 Pcs./Pallet



MODELS OF FLUSHING PLATES

VELA



White



Matt chrome



Bright chrome



Black



White + Gold Ring


 White + Glossy
Chrome Ring


Black + Gold Ring


 Black + Glossy
Chrome Ring


Matt white



Gold

PLUTO



White



Matt chrome



Bright chrome

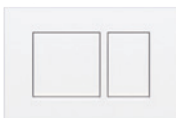


Black



Gold

CERES



White



White matt



Bright chrome

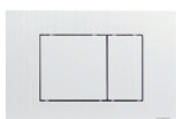


Matt chrome



Black matt

METIS



White



Matt chrome



Bright chrome



Black

VENTUS



White



Matt chrome



Bright chrome

MAGNUS


 STEEL
Stainless steel

 GLASS
White

 GLASS
Black